

From Fvwm2 to the Enterprise Desktop

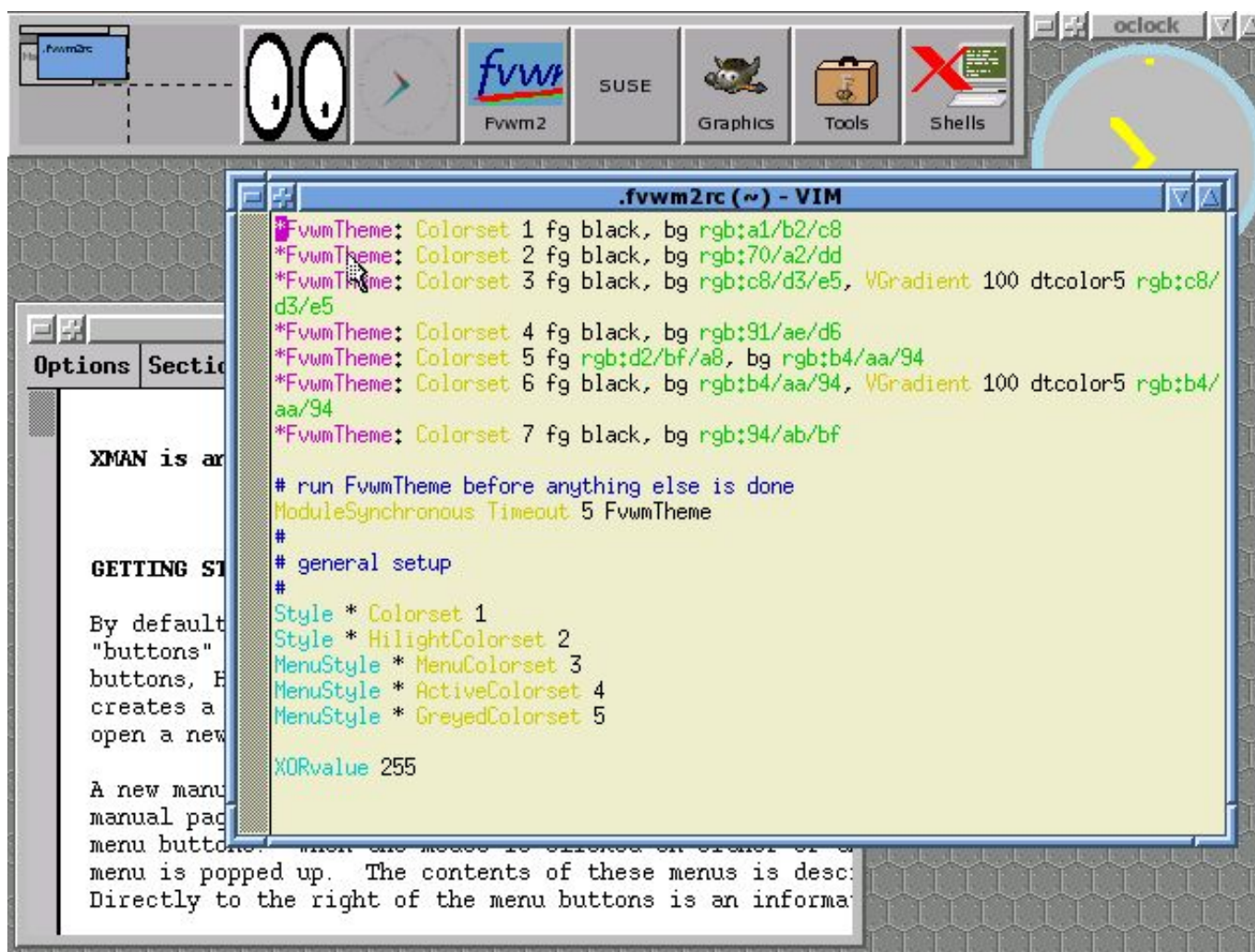
Chris Schlaeger
VP Research & Development



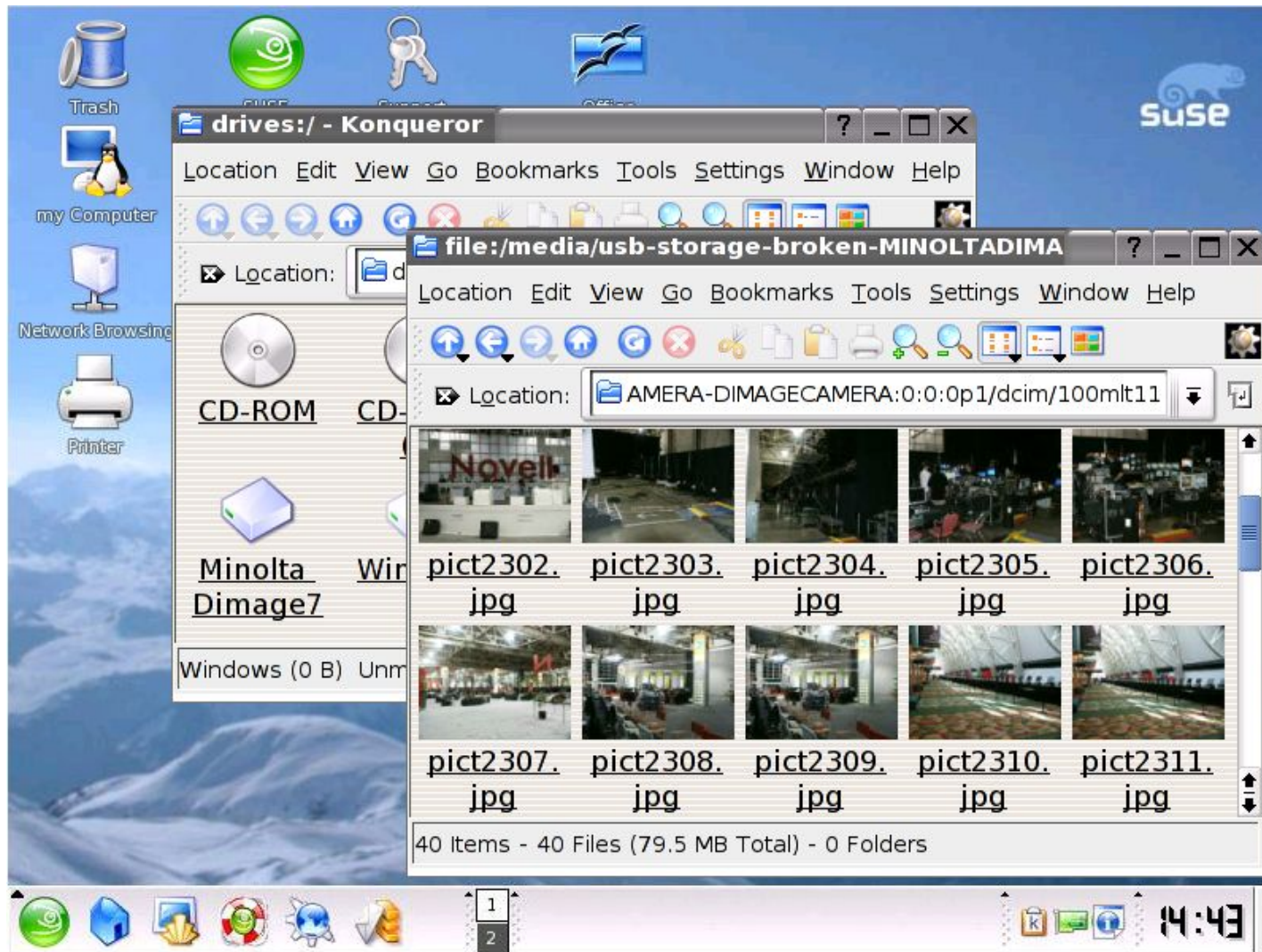
Novell®

Once upon a time...

there was Fvwm2

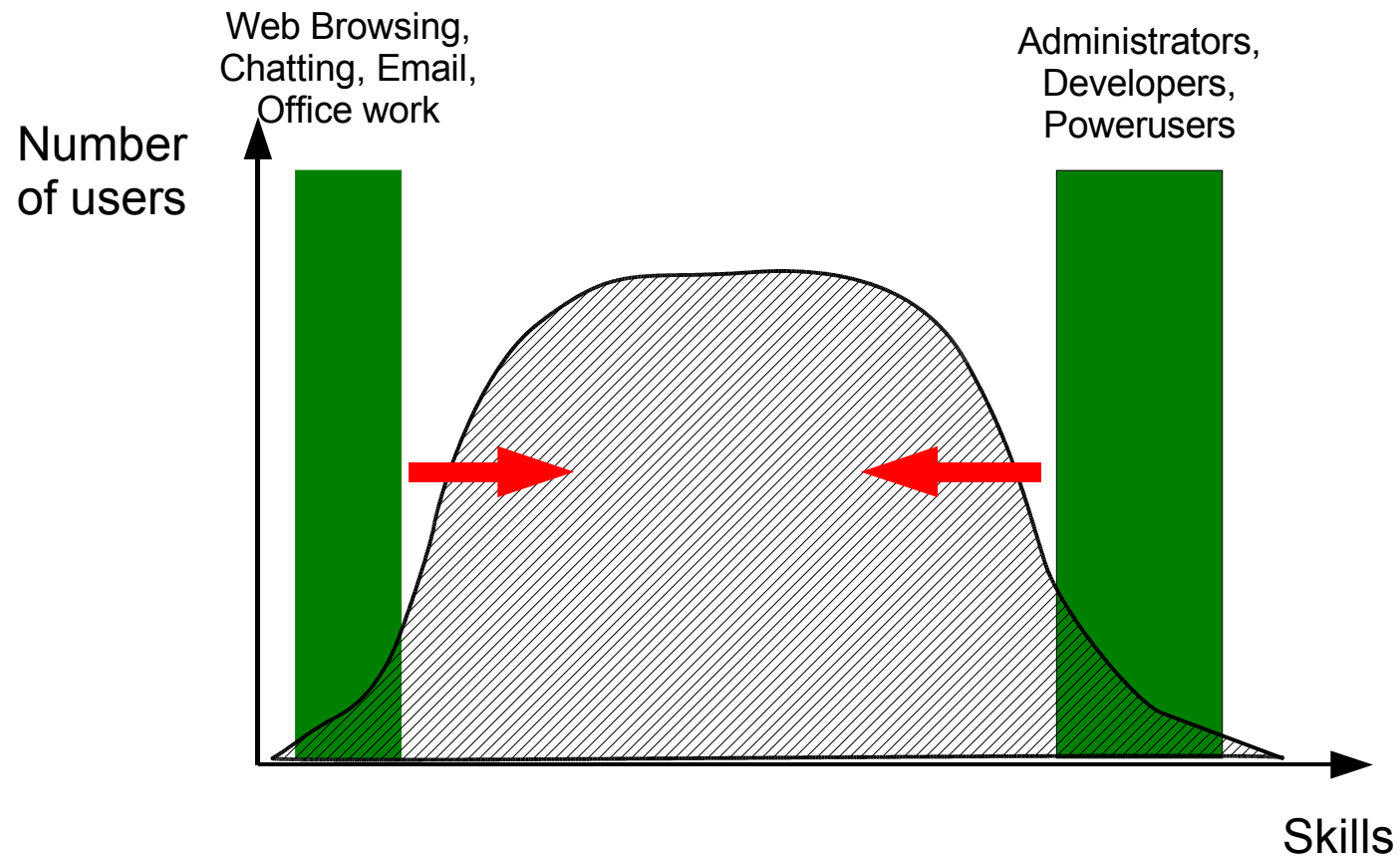


Today we have KDE



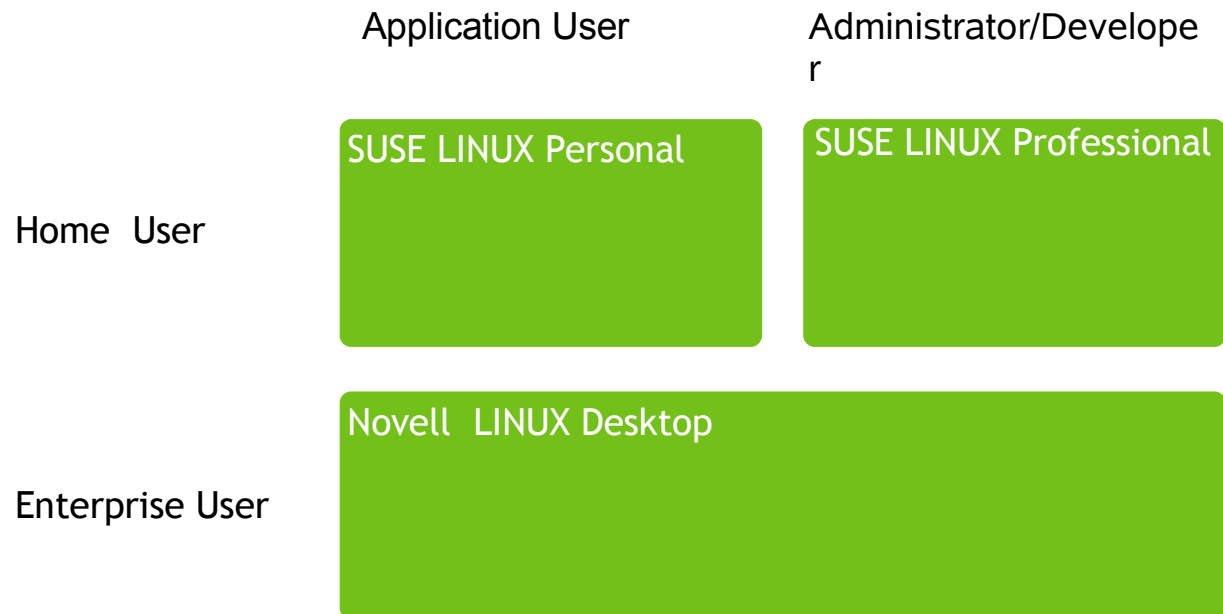
The Linux Desktop Market

Desktop User Spectrum





Target Markets for Linux Desktop





Challenges on the Desktop

- Interoperability
- Usability
- Applications
- Administration

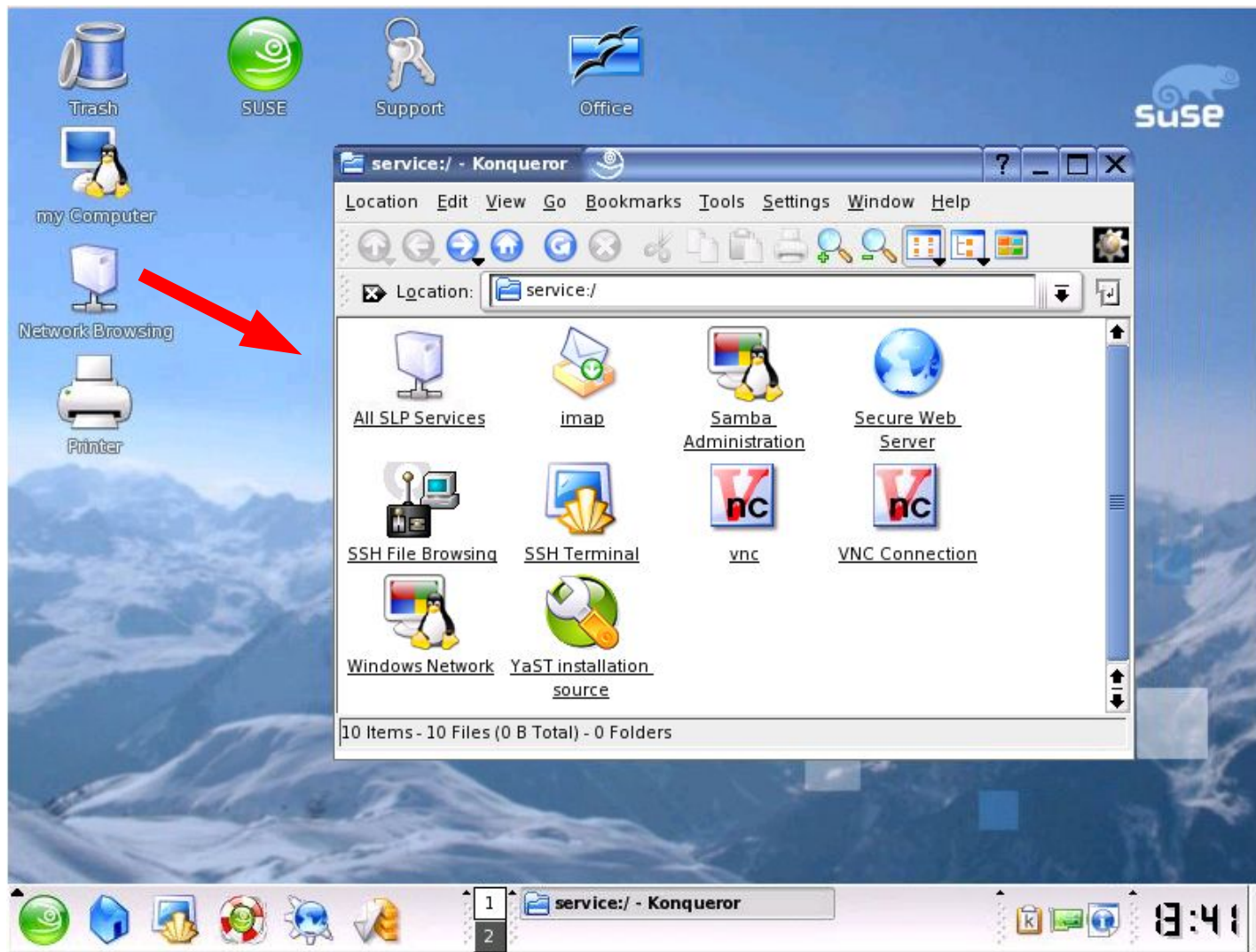
Interoperability:
Seamless Integration with existing
Networks, Applications, Protocols
and Devices



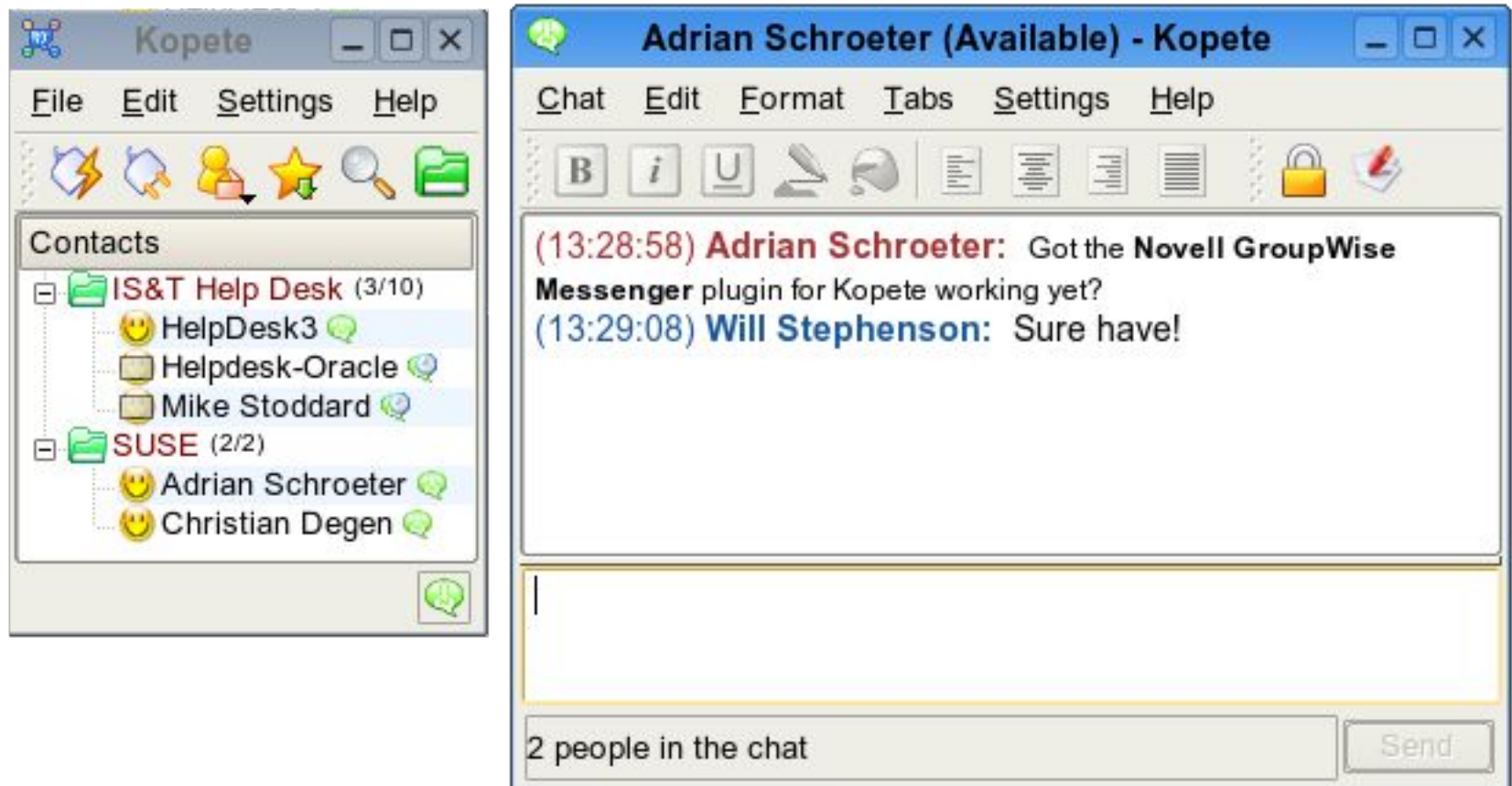
Zero Configuration of OS Services

- Clients find their Service Providers automatically
- Available services are extracted from LAN
- Service activation can be delegated to users
 - Users can share their folders (SMB/NFS/HTTP)
- Plug'n'Play devices are automatically integrated
- Automatic IP assignment
- Dynamic resource access rights management

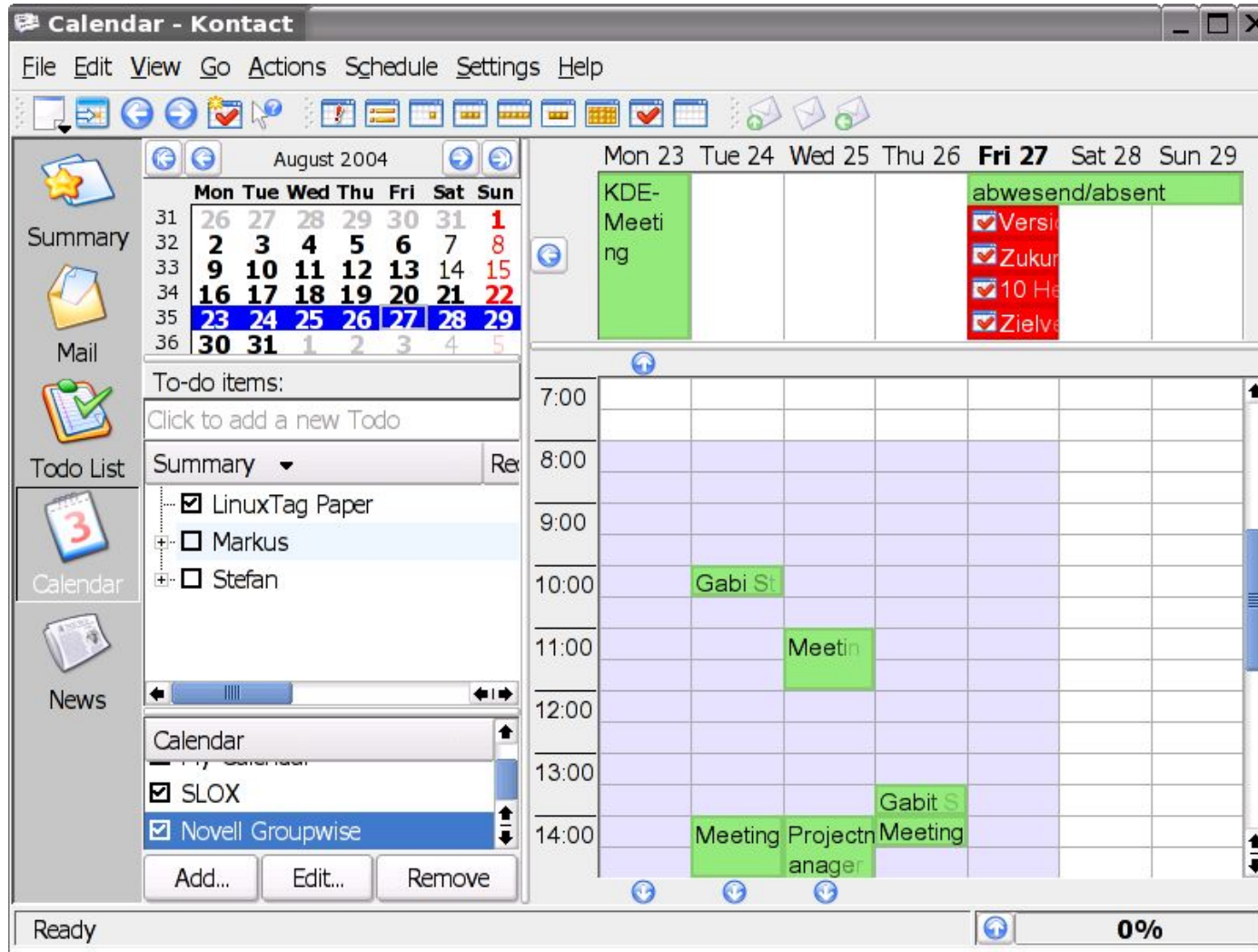
Service Location Protocol (SLP)



Kopete Groupwise Messenger Support



Kontakt Support for SLOX and Groupwise



The screenshot shows the 'Calendar - Kontakt' application window. The title bar reads 'Calendar - Kontakt'. The menu bar includes 'File', 'Edit', 'View', 'Go', 'Actions', 'Schedule', 'Settings', and 'Help'. The toolbar contains various icons for calendar functions. The main window is divided into several sections:

- Left Sidebar:** Contains icons for 'Summary', 'Mail', 'Todo List', 'Calendar', and 'News'.
- Calendar View:** Displays a calendar for August 2004. The days of the week are listed at the top. The calendar shows dates from 26 to 31. The date 27 is highlighted in red, indicating the current day.
- To-do items:** A section below the calendar with a 'Click to add a new Todo' button. It lists items: 'LinuxTag Paper' (checked), 'Markus' (unchecked), and 'Stefan' (unchecked).
- Contact List:** A section below the to-do list showing a list of contacts. The contacts are 'SLOX' and 'Novell Groupwise', both of which are checked.
- Calendar Grid:** A large grid on the right side of the window showing the time of day (7:00 to 14:00) for each day. It displays various events and meetings, including 'KDE-Meeting', 'abwesend/absent', 'Versi', 'Zukur', '10 He', 'Zielva', 'Gabi St', 'Meeting', 'Gabit S', 'Meeting', and 'Projectn anager'.
- Status Bar:** At the bottom, it shows 'Ready' and a progress indicator at '0%'.

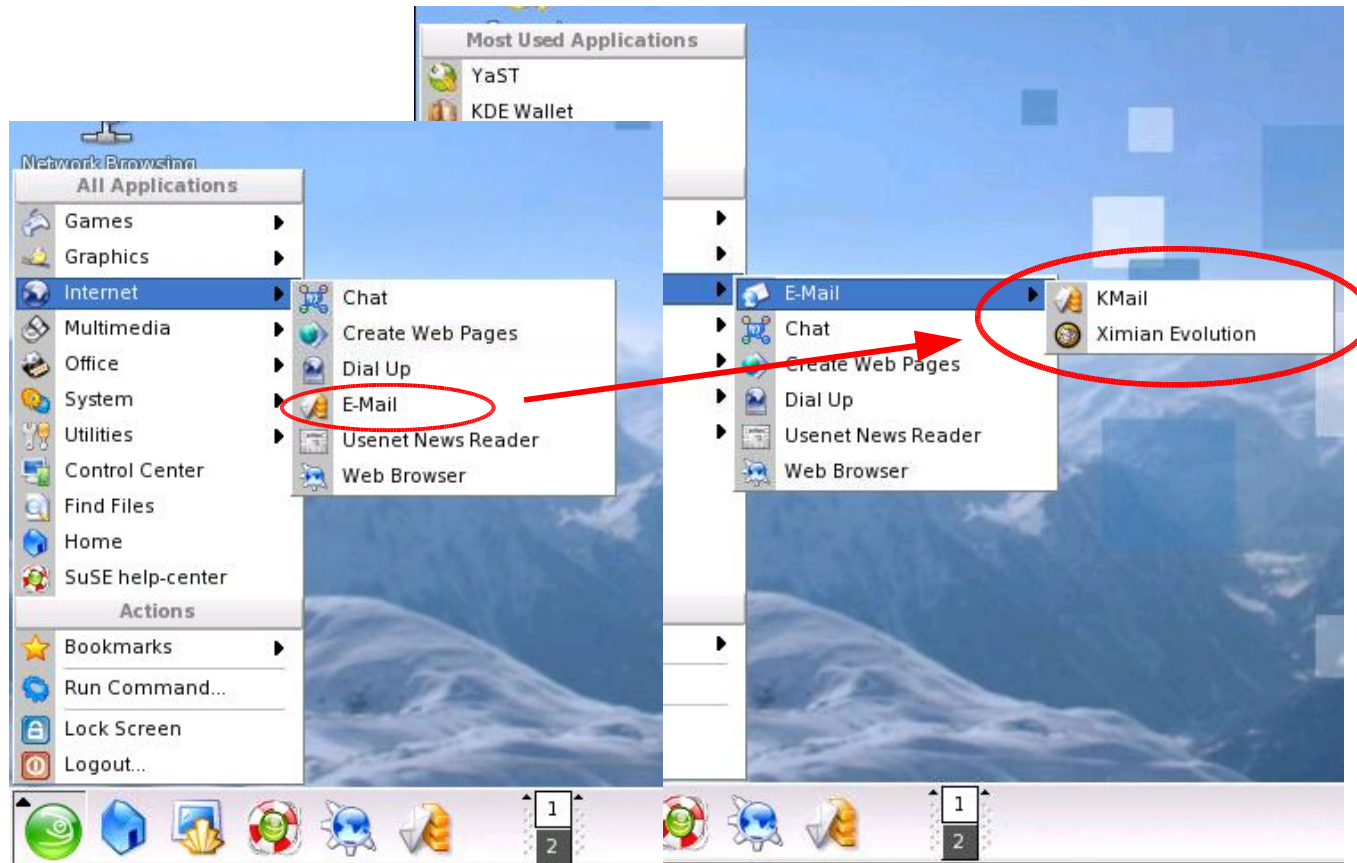


Interoperability Challenges

- NTFS write Support
- Proprietary file formats and protocols
- Tightly integrate OS and Desktop

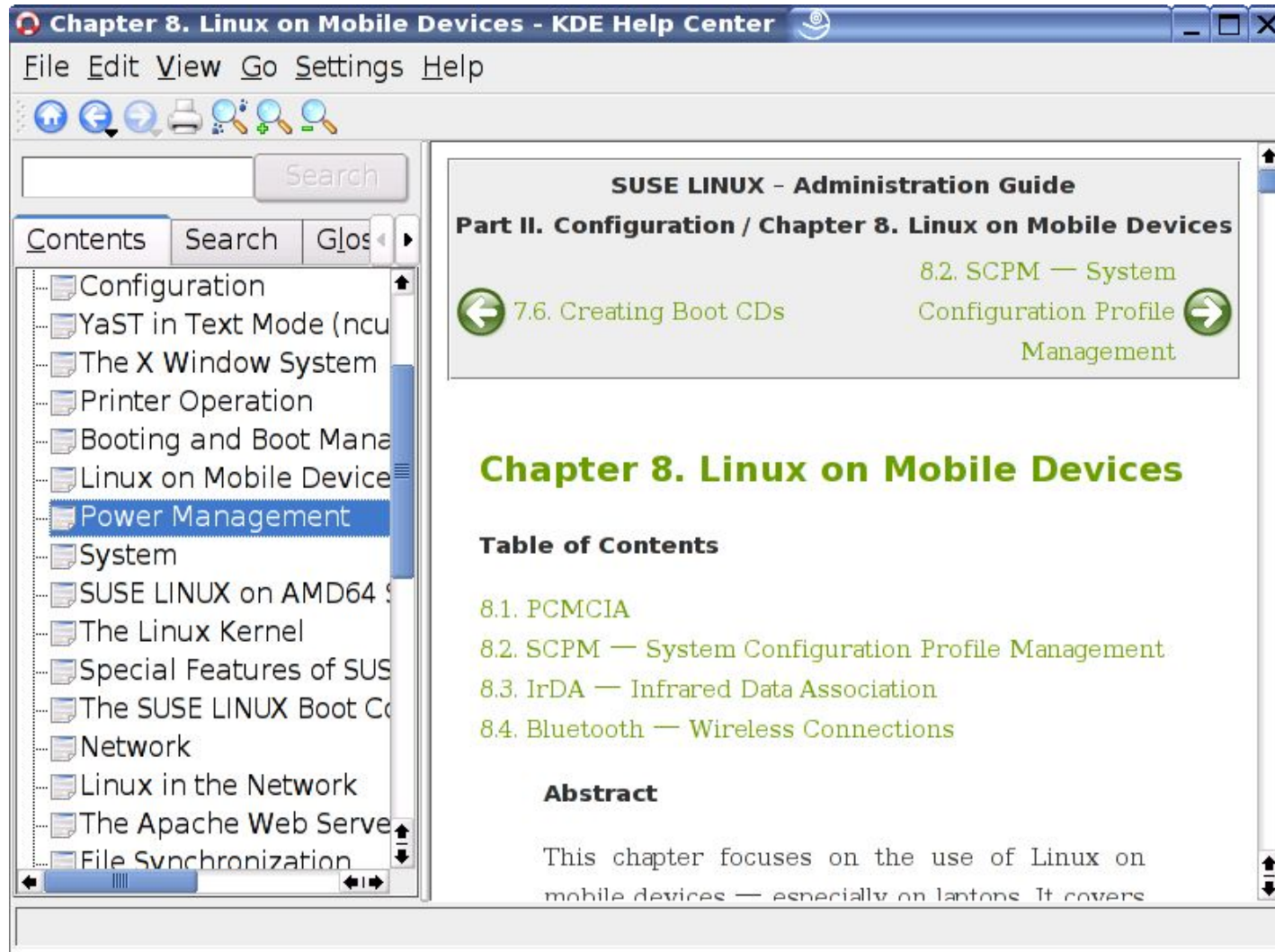
Usability: Offering a flat learning curve to Windows and MacOS users

Keep it simple - yet Powerful

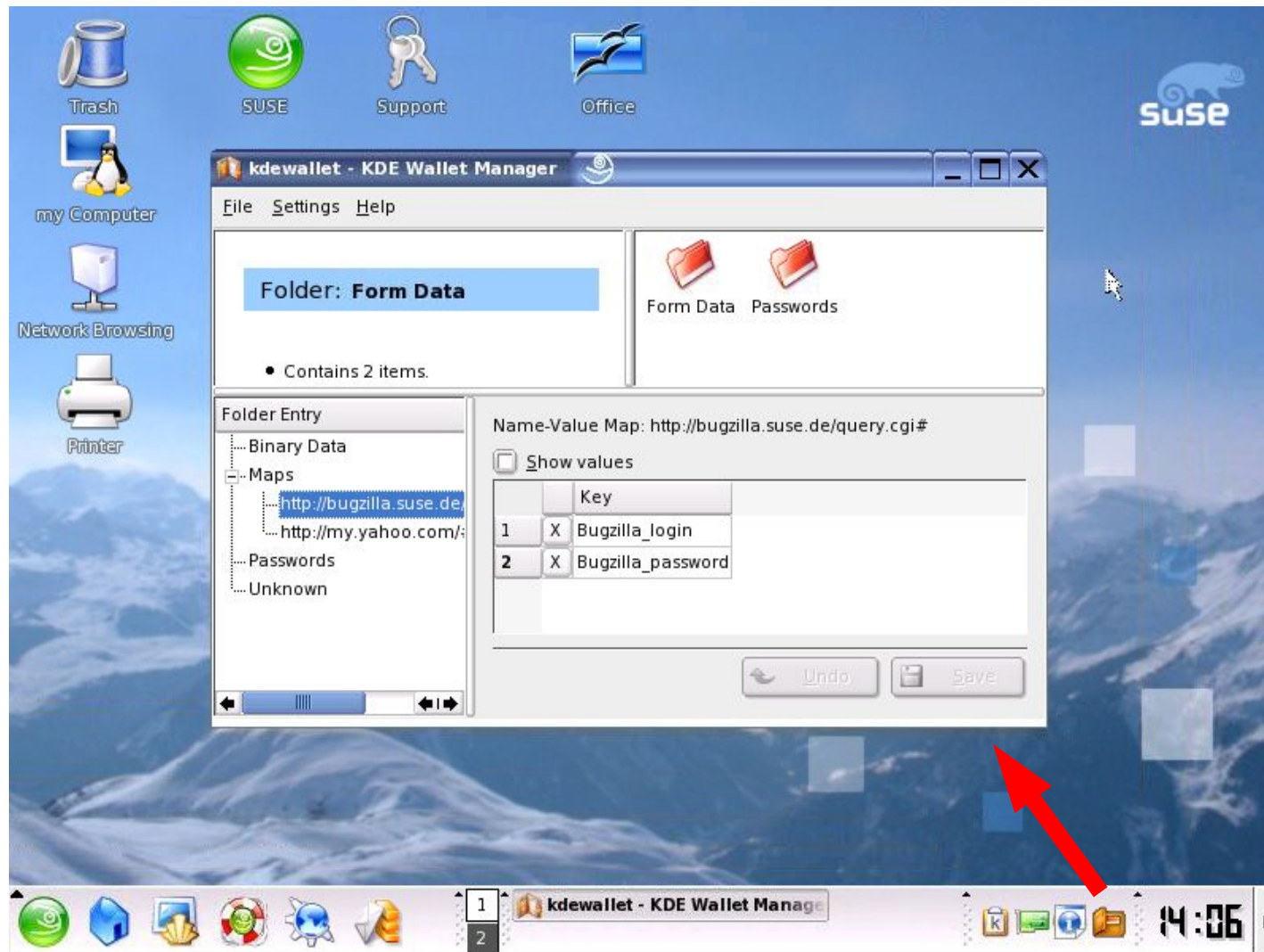


Menu structure adapts to installed software

Integrated Documentation



Password Manager





Password Manager Details

- Manages all kinds of passwords
 - Web logins
 - Host logins
 - Chat passwords
 - Mail logins
- Seamless integration with Browser, Mail client, Messenger and other applications
- Secure storage
- Management Front-end
- Integration with Novell Identity Management

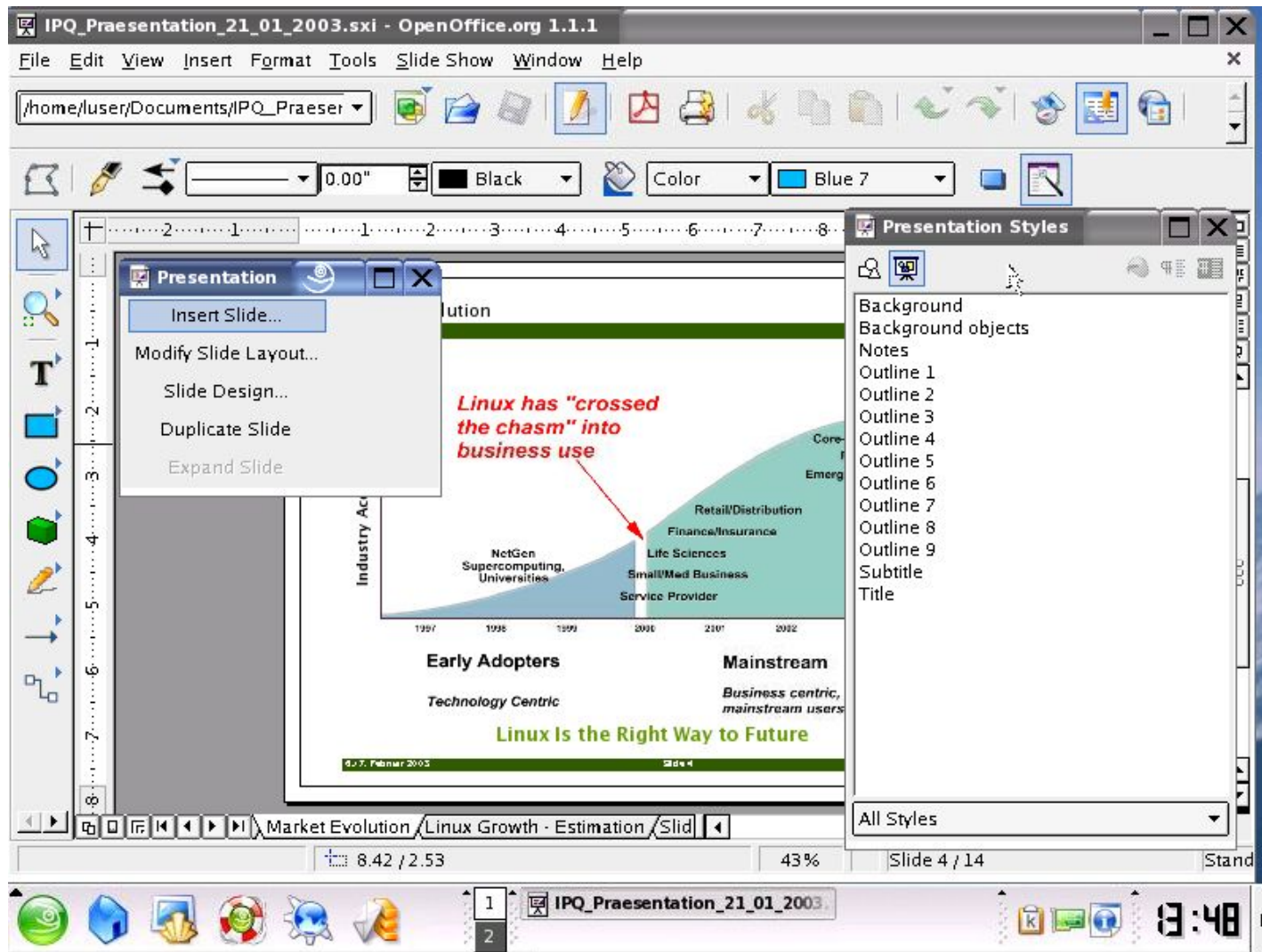


Usability Challenges

- Consistent Look and Feel across all applications
 - KDE Style Guide needed
 - Less toolkits
 - More common infrastructure
- Section 508 Accessibility
 - We need a KDE based on Qt4
- Reduce complexity, do not reduce functionality

Applications:
Finding equivalents, Emulation,
Application Servers

OpenOffice.org replaces MS Office





A first set of Applications

Windows Application

- MS Office
- Outlook, Notes
- AIM, Yahoo Messenger
- MS Developer Studio
- Internet Explorer
- Adobe Photoshop
- Palm Desktop
- ...

Linux Application

- OpenOffice.org
- Kontact, Evolution
- Kopete
- KDevelop
- Konqueror, Mozilla
- Gimp
- Kpilot
- ...



Software Migration Strategies

- Replacement application
- Windows Software Emulation
 - VmWare
 - Wine
 - CrossOver Office
- Application Servers
- Web-based Application



Application Porting Strategies

- Cross platform toolkits (Qt from Trolltech)
- Java
- .net/Mono
- Application Servers
- Web-based Applications

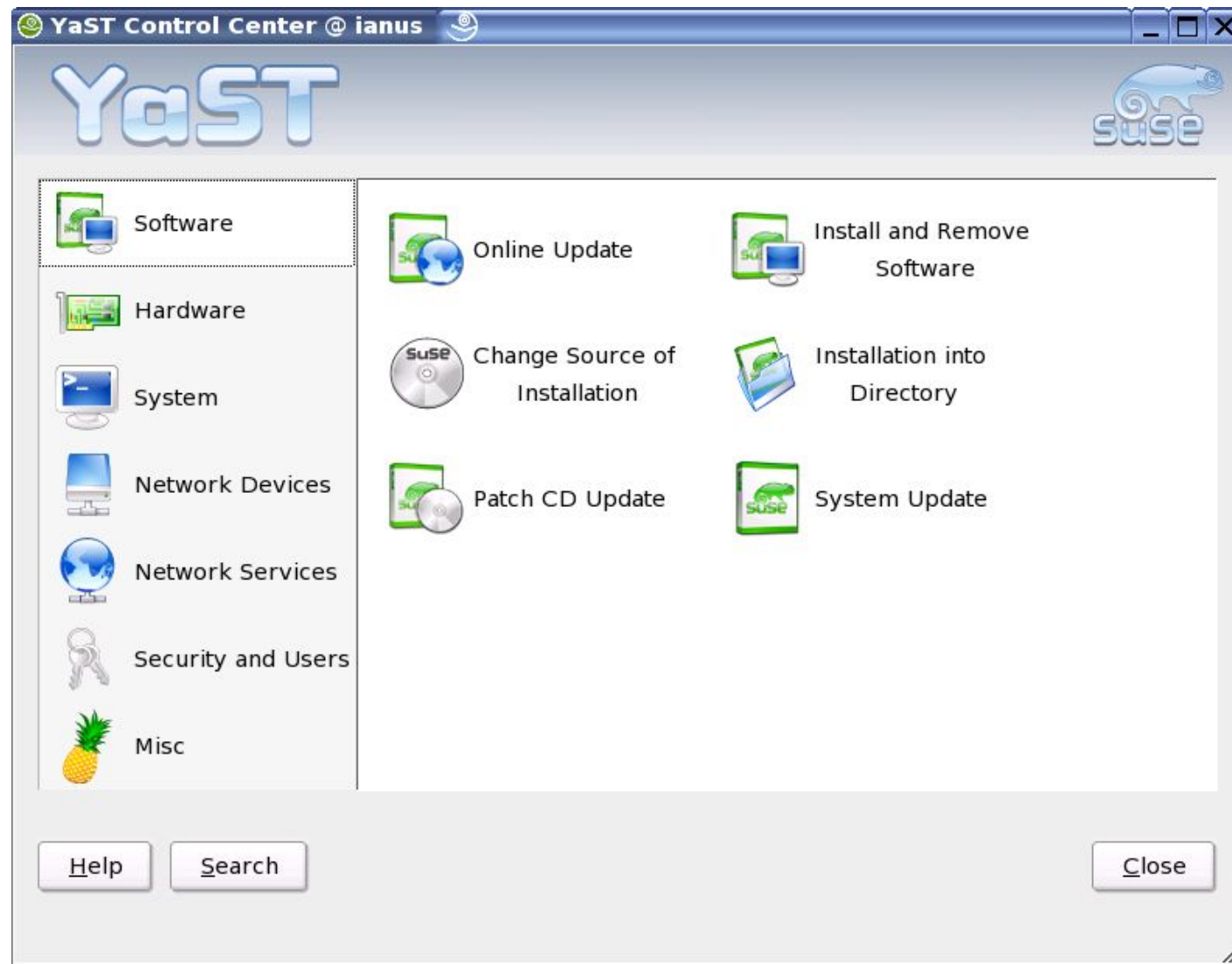


Application Challenges

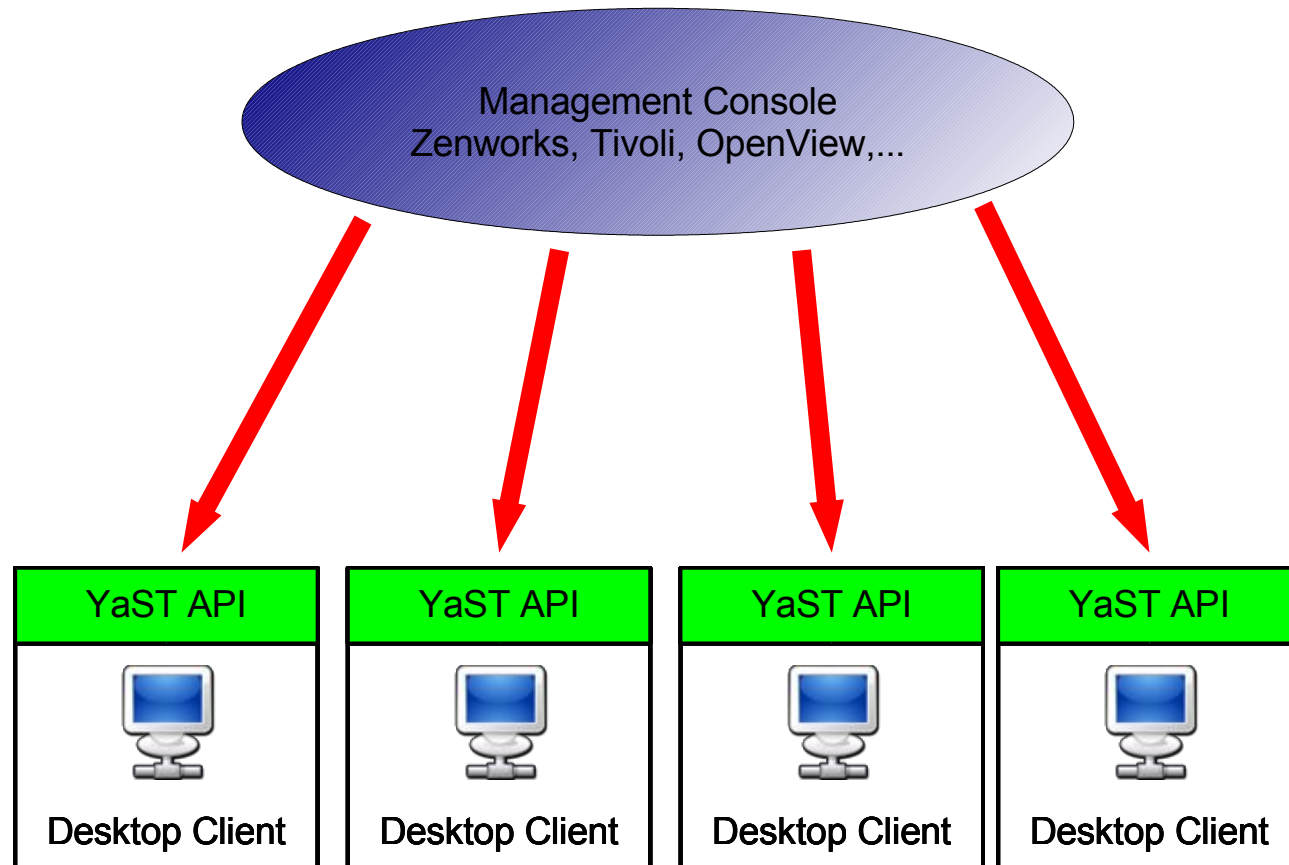
- Attract Windows ISVs to Linux platform
 - Professional ISV Support Program
 - More standardized parts of the Linux OS
 - LSB is moving way to slow
 - Standard Browser for Web Applications
 - Long term ABI stability
- More Openness for Closed-Sourced Applikations
- User like choice, ISVs hate it!
- We need to be prepared for Longhorn

Administration:
Simple, intuitive Tools for
Administrators, powerfull
Interfaces for mass-remote
Administration

YaST: The Administrator's Dashboard



Remote Mass Installation/Administration





Desktop Lockdown (Kiosk Mode)

- Selective Disabling of functions
 - Application set
 - Configuration options
- Default settings of user Profile
 - Menu structure
 - Desktop Background and Icons
 - Default Browser page
- Hierarchic (layered) Profile Concept
 - Settings for Company, Departments, Teams, Persons
- GUI for Administration
- Mass Administration with Zenworks for Linux



Administration Challenges

- System Administration APIs
- Directory Integration
- Less security problems (Security is not optional)
- Long maintenance periods (≥ 5 years)
- Backwards compatibility



Will KDE conquer the Corporate Desktop?

- Linux is more innovative.
- Linux has lower TCO.
- Linux is more secure.
- Linux is open.
- KDE has made tremendous progress.
- KDE offers the most functionality.
- KDE is an independant and healthy project.

Thank You!

Novell.®

General Disclaimer

This document is not to be construed as a promise by any participating company to develop, deliver, or market a product. Novell, Inc., makes no representations or warranties with respect to the contents of this document, and specifically disclaims any express or implied warranties of merchantability or fitness for any particular purpose. Further, Novell, Inc., reserves the right to revise this document and to make changes to its content, at any time, without obligation to notify any person or entity of such revisions or changes. All Novell marks referenced in this presentation are trademarks or registered trademarks of Novell, Inc. in the United States and other countries. All third-party trademarks are the property of their respective owners.

No part of this work may be practiced, performed, copied, distributed, revised, modified, translated, abridged, condensed, expanded, collected, or adapted without the prior written consent of Novell, Inc. Any use or exploitation of this work without authorization could subject the perpetrator to criminal and civil liability.



Novell®